

# SUPPLEMENT FOR FACILITATORS

---



ASSESSMENT TO ACTION.

**Bridget Sweeney**

Tuesday, November 22, 2011

This report is provided by:

Your Company  
123 Main Street  
Smithville, MN 54321  
612-123-9876  
[www.yourcompany.com](http://www.yourcompany.com)



**Your Company**  
**LOGO HERE**

*by Inscape Publishing*



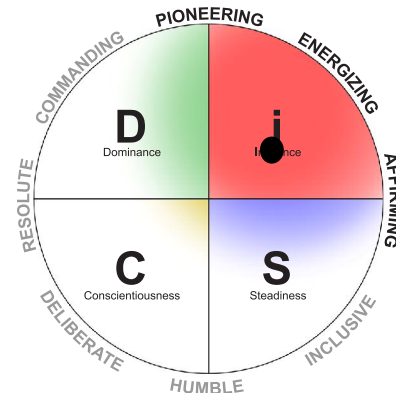
## Supplemental Data for Bridget Sweeney: i Style

Supplement for Facilitators

### Purpose

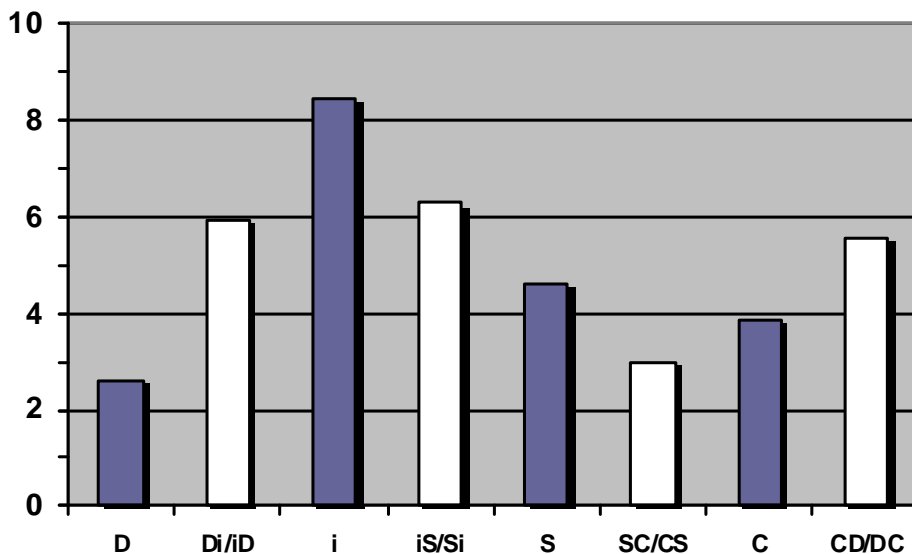
This page is meant to help facilitate a richer discussion about Bridget's DiSC® style by providing more detailed data about her assessment. In addition to her DiSC style and dot, this page provides Bridget's scores for the eight DiSC scales, as well as a list of the assessment items that she rated highly that aren't typical for someone with her i style.

Understanding Bridget's scores on the eight scales can help to explain the location of her dot. For instance, people whose dots fall toward the center of the circle are likely to have several scales that are equally high, whereas people whose dots are close to the edge are likely to have one or two scales that are much higher than the others.



Because her dot is in the i region, this is her primary style.

### Breakdown by DiSC® Scale



Pictured at left are Bridget's scores on each of the eight DiSC scales. Although her DiSC style is i, her unique personal style includes elements of all eight scales. This is important because if she scored high on a scale other than the i scale, she may find that certain pieces of feedback in her Everything DiSC® report fit her better than others.

### Unexpected Items for Bridget's i DiSC Style

The following items were rated highly by Bridget even though these items are not correlated with her i style. This list can help the facilitator and Bridget explore aspects of her personality that may not be consistent with the i style. The parentheses show the rating given to each item on a five-point scale.

- Perfectionistic (4)
- Logical (4)
- Strict (4)
- Conforming (4)
- Cynical (4)
- Questioning (4)